

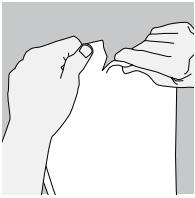
# iEvac®

## SMOKE/FIRE HOOD

### iEvac® Donning Instructions:



This hood pulls over your head like a ski mask. Look at the pictures to see how it is worn. Your head goes inside with the cup at the front. The hood opening goes around your neck. You pull the straps tight so that the cup snugly covers your nose and mouth.



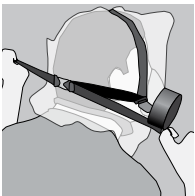
1. Quickly tear open the foil bag at the slit marked with a "tear to open" sticker.
2. Take out and unfold the hood



3. Stretch the hood opening so that your head will go through.
4. With the blue cup toward the front, pull the hood over your head & pull the hood opening down to the bottom of your neck.



**IMPORTANT: Immediately make sure the cup is covering your nose and mouth and fits under your chin.**



5. Using both hands, **quickly** grab the ends of the straps and pull them tight **ensuring that the cup fits snugly.**

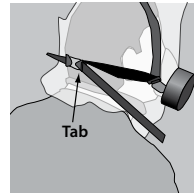


6. Make sure the hood opening directly touches your neck all around.

### Removing the iEvac®

Do not remove the iEvac® in a contaminated area.

When it is safe to do so, prepare to remove iEvac® by loosening the straps.



1. First lift the tab (protruding end) of one connecting buckle with your thumb and with your other hand pull the elastic strap towards the front.

2. Repeat with the second buckle and strap.

3. Pull the iEvac® over your head.

### iEvac® Training Hood

While being worn it is normal for the iEvac® hood itself to move very slightly in phase with the breathing of the wearer. This small harmonic movement shows that the neck seal is performing correctly and preventing smoke and other materials from by-passing the filters and entering the hood. Most people will not detect it, but the in-and-out motion may be pronounced when the hood is worn by larger individuals or when the wearer is breathing very deeply. **The protection provided by the iEvac® is not affected by this movement.**

After each donning of an iEvac® training hood it is to be cleaned and disinfected with a sterilized wipe. All parts of the iEvac® are to be cleaned and disinfected, including the neck seal, the half mask and the interior of the clear visor. **Be aware that, due to this sterilization process, the anti-fog coating on the inside of the clear visor may be worn away.** As a result some fogging may occur when the hood is donned by subsequent wearers. **The anti-fog coating on the clear visor will not deteriorate while the iEvac® is stored inside its sealed package.**